

RIVKLE® Hydraulic/pneumatic setting tool

RIVKLE® P2005 pneumatic/hydraulic setting tool

This high-speed robust stroke-controlled setting tool is used to set RIVKLE® Standard blind rivet nuts made of aluminium (M3–M12), steel (M3–M12) and stainless steel (M3–M10).

Delivery scope:

- Basic tool
- Operating instructions
- Practical case for storage and transport

Threaded mandrels and anvils are not included in the delivery scope and must be ordered separately.

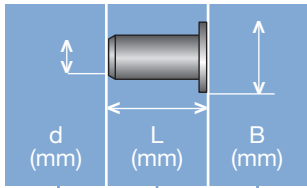
Technical information can be found on the last page.



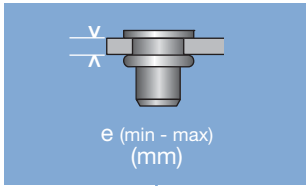
Diameter (d)	Article number	Weight g
M 3 - M 12	23615501000	2600

All technical data refer to the measure mm

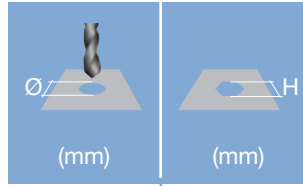




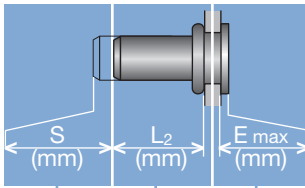
Head diameter
Overall length
Thread size



Grip range
 Defines the range of total thickness of the customers part (even if it consists of more than one layer)



Hole geometry
 If round → diameter
 If hexagonal → width across flats

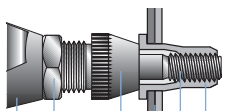


Head projection after setting
 Variable according to the application (setting load, material substrate, etc.)

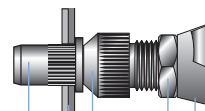
Blind side projection after installation
 Defines the clearance needed on the blind side (cannot be used for quality control)

Setting stroke
 Difference of total length before and after installation

RIVKLE® Nut



RIVKLE® Stud



- RIVKLE®
- Mandrel*
- Customers part
- Anvil*
- Counter nut
- Setting tool

in accordance to chosen RIVKLE®

All technical data refer to the measure mm

